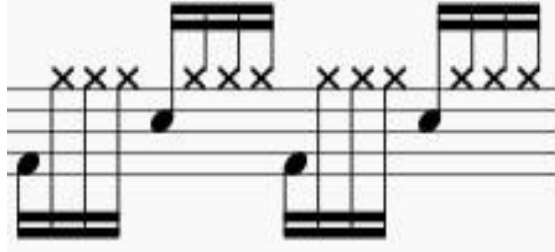
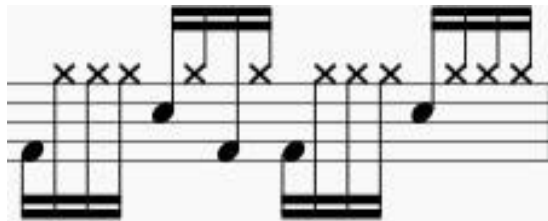


# „Let her go“ - Passenger

Grundbeat einfach



Grundbeat erweitert



## Aufbau

4 Takte – Intro

8 Takte – Strophe

8 Takte – Chorus

8 Takte – Strophe


8 Takte – Chorus

8 Takte – Bridge

8 Takte - Chorus

Intro

3x 

1x 

Strophe

3x 

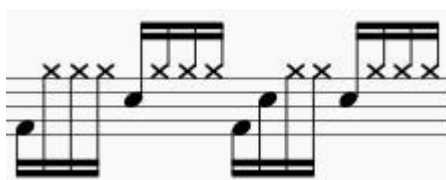
1x 

3x 

1x 

Chorus

3x 

1x 

3x 

1x 

Übergang zu Bridge



Bridge Rhythmus wie Chorus



